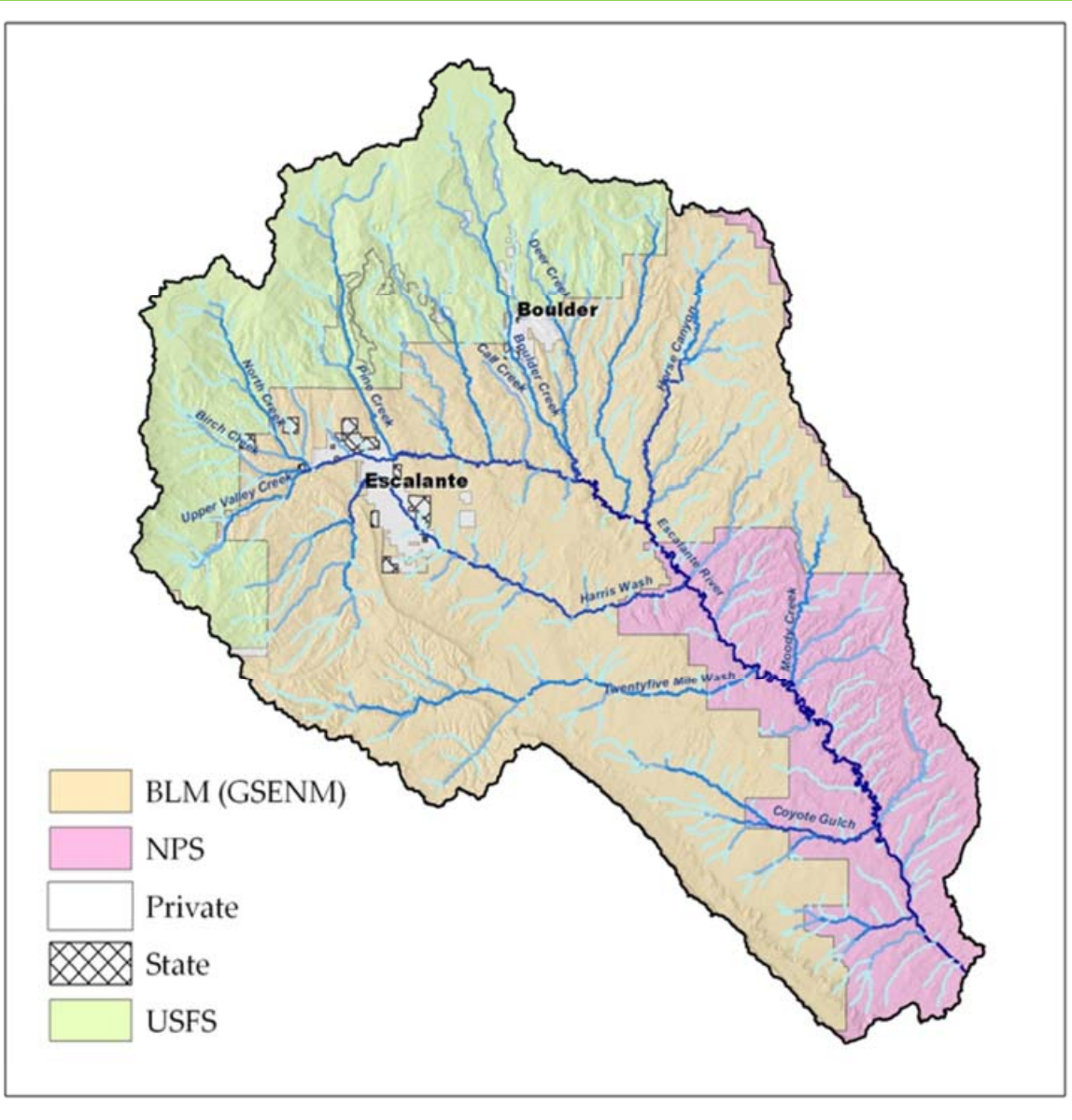


# ESCALANTE RIVER WATERSHED PARTNERSHIP



© Tim Peterson – flown by LightHawk



**MISSION STATEMENT:**  
*Restore and maintain the natural ecological conditions of the Escalante River and its watershed and involve local communities in promoting and implementing sustainable land and water use practices.*

# PARTNERS

Boulder Community Foundation  
Color Country Cooperative Weed Management Area  
Dixie National Forest United States Forest Service  
Escalante Canyon Outfitters  
Four Corners School/ Canyon Country Youth Corp  
Glen Canyon National Recreation Area, National  
Park Service  
Grand Canyon Trust  
Grand Canyon Wildlands Council  
Grand Staircase-Escalante National Monument,  
Bureau of Land Management  
Grand Staircase-Escalante Partners  
Great Old Broads for Wilderness  
The Nature Conservancy  
Rim to Rim Restoration  
Tamarisk Coalition  
Trout Unlimited  
U.S. Fish & Wildlife Service/Partners for Fish &  
Wildlife Program  
Utah Division of Forestry, Fire & State Lands  
Utah Division of Water Quality  
Utah Division of Wildlife Resources  
Wild Utah Project  
Wilderness Volunteers



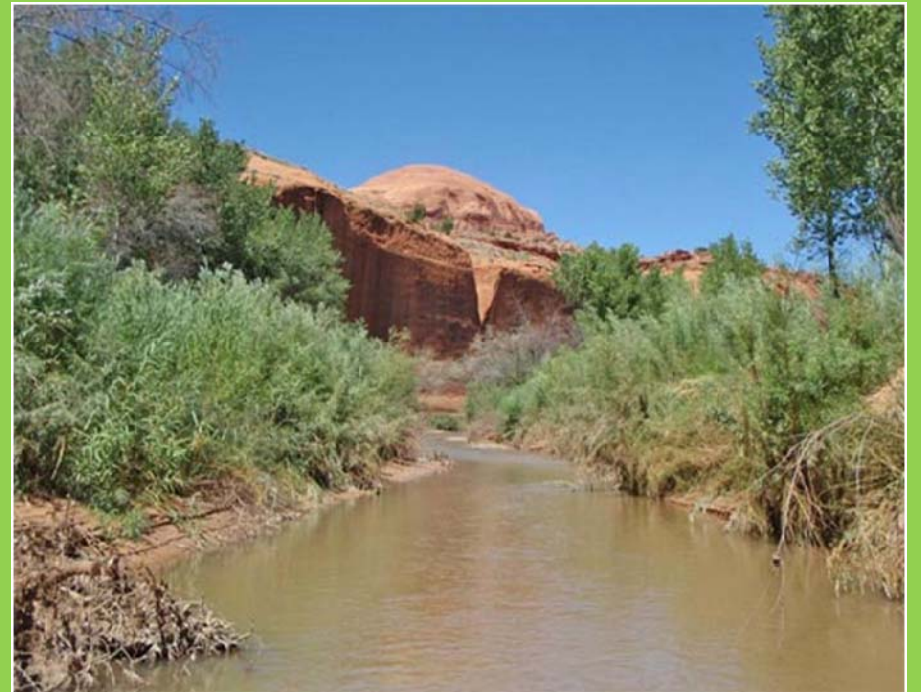
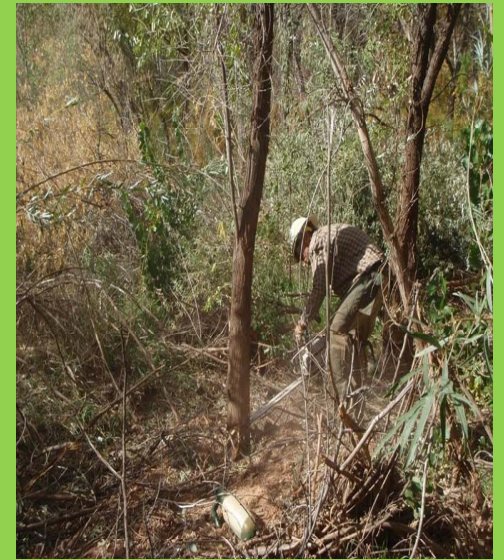
# CONSERVATION TARGETS

- *Lowland riparian*
- *Mountain riparian*
- *Warm water aquatic*
- *Cold water aquatic*
- *Springs and seeps*
- *Wet meadows/wetlands*
- *Aspen*

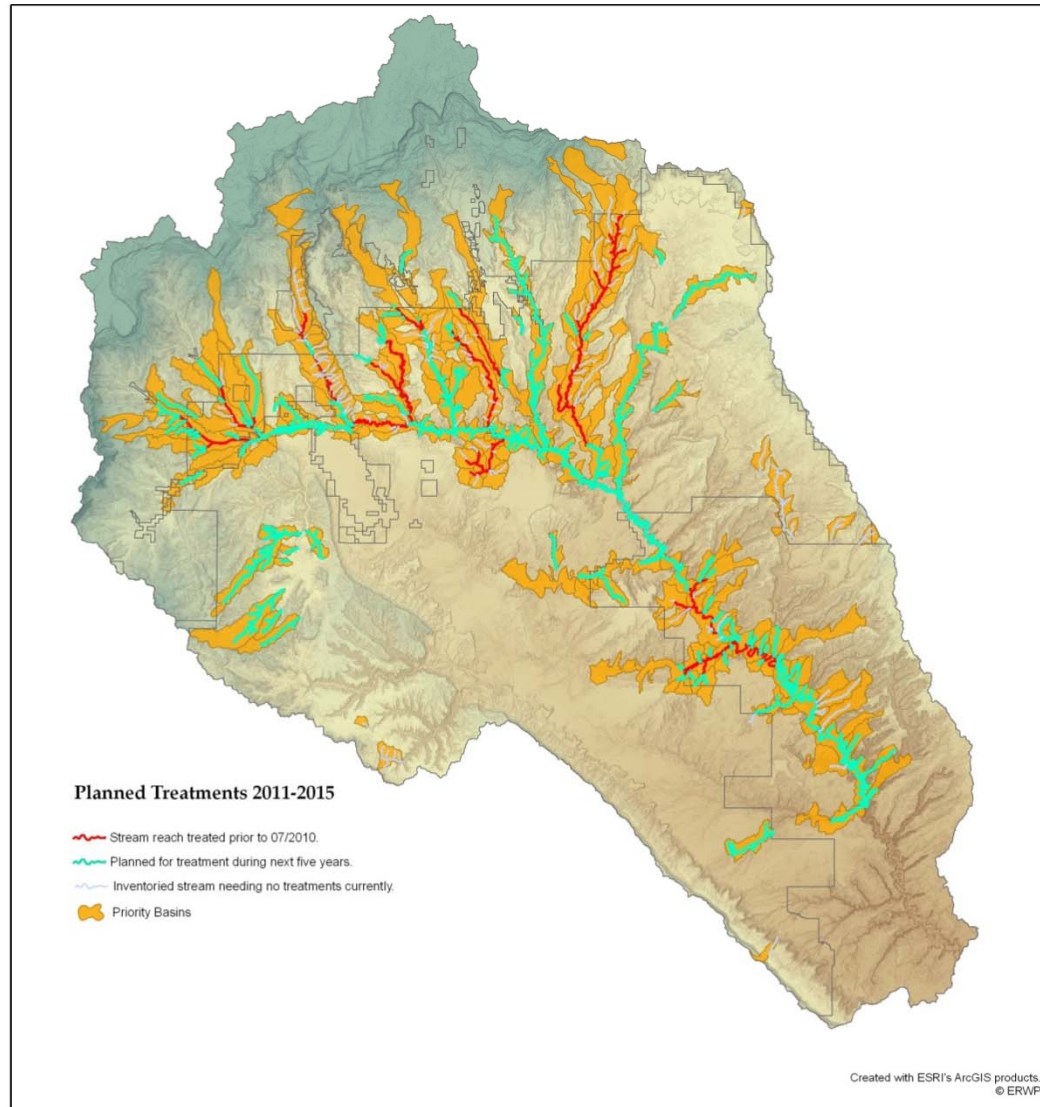


# Committees





# Russian Olive Control and Re- treatment Planning 2011-2015

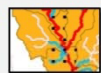


## Escalante River Watershed Decision Criteria 4 June 2010

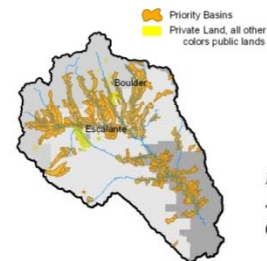
Map x

### High Priority Basins

High priority basins for treatment have streams below 7100' in elevation, streams that are adjacent to previously treated areas, or contain an Outstanding Resource Value. Stream reaches displayed above are within these high priority basins and represent the highest priority action areas.



- Adjacent to Treated Area
- Treated area
- Untreated area
- Priority Basins
- Outstanding Resource Area



Prepared for ERWP by:



# 2012

- Continue Russian olive control work and monitoring – Alvey Wash inventory
- Develop Restoration Plan for treated areas
- Initiate Russian olive research project to determine ecology of the species and when it invaded
- Initiate spring and wet meadow surveys
- Implement Colorado River Cutthroat Trout management planning and water banking
- Provide support to Dixie National Forest Travel Plan
- Continue beaver re-introduction and education outreach to public
- Initiate baseline water quality studies - DWQ
- Fundraise for Science Symposium and Climate Change Assessment

## Keys to Success

Science-based  
Planning

Local Community  
Engagement

Adequate Funding

Monitoring and  
Feedback

Facilitated  
meetings